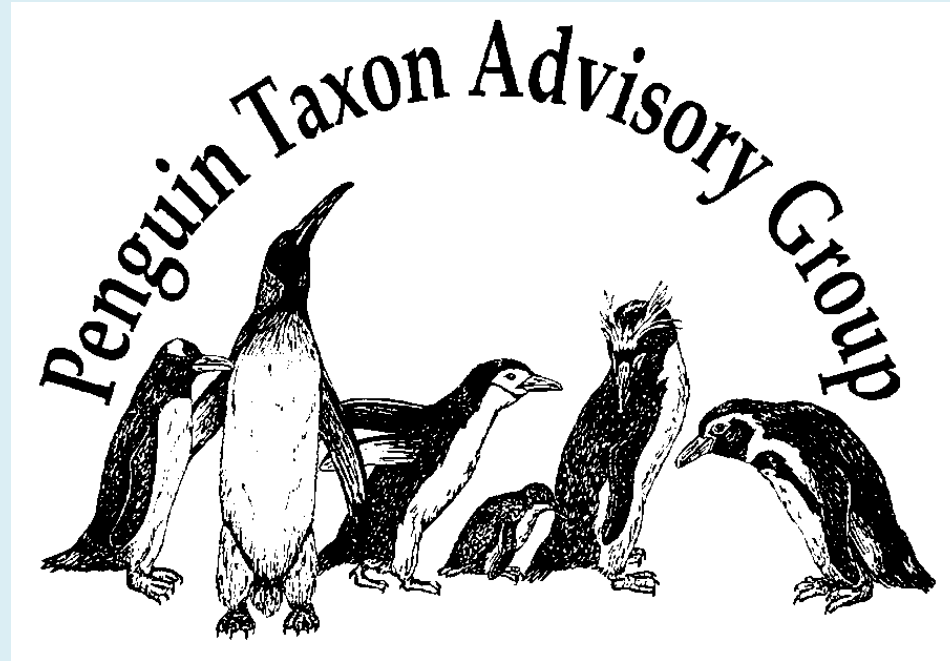


AZA

Penguin Workshop



Second AZA Penguin Workshop

1990 AAZPA Penguin Workshop Sacramento, CA - 1990

[Aspergillosis Biologic Treatment in Fungus Diseases](#)

Patricia Stoddard - Willamette Laboratories

[Avian Malaria](#)

Mike Cranfield, Fred Beall, Mary Skjoldager, and Donna Ialeggio, Baltimore Zoo

[The Effects of Diet and Feeding Regimen on Growth Rates of Magellanic Penguins](#)

Nancy Anne Schofield - San Francisco Zoological Gardens

[Field Studies of *Spheniscus* Penguins](#)

David Cameron Duffy - University of Georgia

[Handrearing Guidelines for the Humboldt Penguin](#)

Linda M. Henry - Sea World California

[Molt Patterns of Black-footed Penguins \(*Spheniscus demersus*\) at Baltimore Zoo](#)

Kathy Bennett - San Francisco Zoo

[Spheniscus Penguins: An Overview of the World Captive Population](#)

Cynthia A. Cheney - Washington Park Zoo

[Spheniscus Penguins: Workshop on Field Studies and Captive Management](#)

Edited by: Patricia A. McGill - Chicago Zoological Society

[Patterns of Incubation Behavior in Captive-housed Adelie Penguins: Implications for Long-term Penguin Breeding Programs](#)

Sue Ellis-Joseph, Ph.D. - Minnesota Zoological Garden

[Supplements Available and Nutrient Content of Fish Fed to Humboldt Penguins](#)

Susan D. Crissey, Ph.D. - Chicago Zoological Society

ABSTRACTS AVAILABLE ON THE MEMBERS
ONLY SECTION OF THE ASAG WEBSITE

<http://aviansag.org/>

- **Introduction/TAG updates**
- **Penguins as Marine Sentinels: Building Science Partnerships**
- **African Penguins: A Pilot Species for AZA's New SAFE Program**
- **Final Population Viability Analysis Results for the Penguin TAG**
- **Reproduction 101 - Basic Overview of Egg Incubation and Chick Rearing**
- **Creative Nesting: Maximizing your exhibit space**
- **AARP(enguins)**
- **Cataracts in crested penguins: prevalence, risk/protective factors, and the impact of surgical treatment on penguin welfare**
- **The Saint Louis Zoo's Penguin and Puffin Coast; Celebrating Twelve Years as North America's First Walk-through Sub-Antarctic Penguin Habitat**
- **Do You Waddle Play? A Collaborative Discussion of Penguin Enrichment Purposes, Compositions and Complications.**
- **Animal Management Procedures to Support Magellanic Penguin Artificial Insemination Programs.**
- **Evaluation of Ambassador Magellanic Penguins Behavioral and Corticosterone Responses to Behind the Scenes Tours.**

- Introduction/TAG updates
- **Penguins as Marine Sentinels: Building Science Partnerships**
- **African Penguins: A Pilot Species for AZA's New SAFE Program**
- Final Population Viability Analysis Results for the Penguin TAG
- Reproduction 101 - Basic Overview of Egg Incubation and Chick Rearing
- Creative Nesting: Maximizing your exhibit space
- AARP(enguins)
- Cataracts in crested penguins: prevalence, risk/protective factors, and the impact of surgical treatment on penguin welfare
- The Saint Louis Zoo's Penguin and Puffin Coast; Celebrating Twelve Years as North America's First Walk-through Sub-Antarctic Penguin Habitat
- Do You Waddle Play? A Collaborative Discussion of Penguin Enrichment Purposes, Compositions and Complications.

- Introduction/TAG updates
- Penguins as Marine Sentinels: Building Science Partnerships
- African Penguins: A Pilot Species for AZA's New SAFE Program
- **Final Population Viability Analysis Results for the Penguin TAG**
- **Reproduction 101 - Basic Overview of Egg Incubation and Chick Rearing**
- **Creative Nesting: Maximizing your exhibit space**
- AARP(enguins)
- Cataracts in crested penguins: prevalence, risk/protective factors, and the impact of surgical treatment on penguin welfare
- The Saint Louis Zoo's Penguin and Puffin Coast; Celebrating Twelve Years as North America's First Walk-through Sub-Antarctic Penguin Habitat
- Do You Waddle Play? A Collaborative Discussion of Penguin Enrichment Purposes, Compositions and Complications.

- **Introduction/TAG updates**
- **Penguins as Marine Sentinels: Building Science Partnerships**
- **African Penguins: A Pilot Species for AZA's New SAFE Program**
- **Final Population Viability Analysis Results for the Penguin TAG**
- **Reproduction 101 - Basic Overview of Egg Incubation and Chick Rearing**
- **Creative Nesting: Maximizing your exhibit space**
- **AARP(enguins)**
- **Cataracts in crested penguins: prevalence, risk/protective factors, and the impact of surgical treatment on penguin welfare**
- **The Saint Louis Zoo's Penguin and Puffin Coast; Celebrating Twelve Years as North America's First Walk-through Sub-Antarctic Penguin Habitat**
- **Do You Waddle Play? A Collaborative Discussion of Penguin Enrichment Purposes, Compositions and Complications.**

OPEN LUNCH DISCUSSION

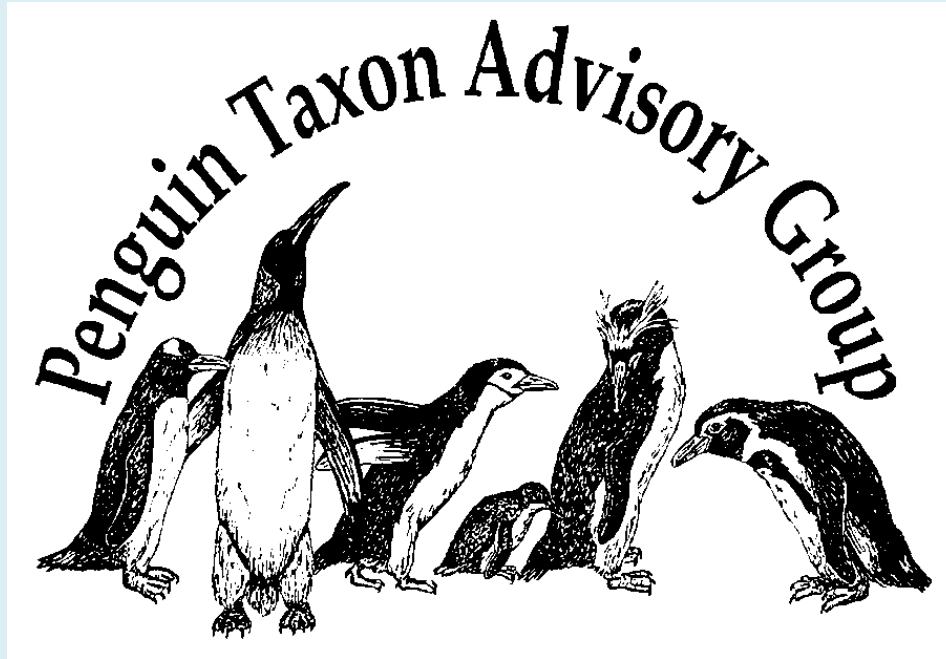
Improving sustainability across different penguin species.

REPRODUCTIVE MANAGEMENT WORKSHOP

- **Animal Management Procedures to Support Magellanic Penguin Artificial Insemination Programs. 2:30 Today**

ASAG GENERAL SESSION

- **Evaluation of Ambassador Magellanic Penguins Behavioral and Corticosterone Responses to Behind the Scenes Tours. 2:30 Wednesday**



UPDATE

TAG Steering Committee

Name	Institution	Term Ends
Tom Schneider Chair	Detroit Zoological Society	
Heather Urquhart Vice-Chair	New England Aquarium	2015
Gayle Sirpenski Secretary	Mystic Aquarium	2016
Sherry Branch	Sea World Orlando	2017
Colleen Lynch	Riverbanks Zoological Park	2017
Steve Sarro	National Zoological Park	2017
Rick Urban	Newport Aquarium	2017
Susan Cardillo	Central Park Zoo	2017
Stephanie Huettnner	Omaha's Henry Doorly's Zoo	2016
Diane Olsen	Moody Gardens	2016
Mike Macek	St. Louis Zoo	2016
Geneve Darnell	Jacksonville Zoo	2016
Lauren DuBois	Sea World San Diego	2015
Alex Waier	Milwaukee County Zoo	2015
MaryJo Willis	Denver Zoo	2015

TAG Program Managers

Species	Name	Institution	Leader Since
Adelie Penguin	Lauren DuBois	Sea World San Diego	2000
African Penguin	Steve Sarro	National Zoological Park	1995
Little Blue Penguin	Heather Urquhart	New England Aquarium	
Chinstrap Penguin	Robert Flores	Sea World San Antonio	2010
Emperor Penguin	Linda Henry	Sea World San Diego	NA
Gentoo Penguin	Sharon Jarvis	Sea World Orlando	2004
Humboldt Penguin	Alex Waier	Milwaukee County Zoo	2009
King Penguin	Linda Henry	Sea World San Diego	2013
Macaroni Penguin	Jessica Jozwiak	Detroit Zoological Society	2000
Magellanic Penguin	Nancy Gonzalez	Wildlife Conservation Society	2005
Southern Rockhopper	Stephanie McIntosh	Omaha's Henry Doorly's Zoo	2014
Northern Rockhopper	Malu Celli	Calgary Zoo	2014

TAG Advisors

Position	Person	Institution
Education	Elizabeth Mulkerrin	Omaha's Henry Doorly's Zoo
Sustainability	Colleen Lynch	Riverbanks Zoological Park
Veterinary	Roberta Wallace	Milwaukee County Zoo
Veterinary	Ann Duncan	Detroit Zoological Society
Veterinary	Todd Schmitt	Sea World San Diego
Nutritional	Kerri A. Slifka	Dallas Zoo
Reproduction	Dr. Justine O'Brien	Sea World San Diego
Welfare	Stephanie Allard	Detroit Zoological Society
Field Conservation	Patty McGill	Dallas Zoo
Field Conservation	P. Dee Boersma	University of Washington
Field Conservation	Pablo García Borboroglu	Global Penguin Society, CONICET
Exhibit Lighting	Linda Henry	Sea World San Diego
Green Practices	Stephanie Huettner	Omaha's Henry Doorly Zoo
Life Support	Love Ruddell	Denver Zoo
Registrar	Jenn Wilson	Omaha's Henry Doorly Zoo

TAG Liaisons

Position	Name	Institution
AZA	Candice Dorsey	AZA
WCMC	Sherry Branch	Sea World Orlando
Animal Welfare Committee	Stephanie Allard	Detroit Zoological Society
AZA Population Management Center	Sarah Long	Lincoln Park Zoo AZA Population Management Center
IUCN SSC Penguin Specialist Group	Tom Schneider	Detroit Zoological Society
International Penguin Conference	Heather Urquhart	New England Aquarium
EAZA TAG	Pierre de Wit	Zoo Emmen
JAZA TAG	Masanori Kurita	Port of Nagoya Public Aquarium
ZAA TAG	Nick Boyle	Taronga Zoo



AZA PENGUIN
REGIONAL COLLECTION PLAN
2015 - 2020

Fifth Edition

TAG Chair, Tom Schneider, Detroit Zoological Society
TAG Vice Chair, Heather Urquhart, New England Aquarium
TAG Secretary, Gayle Sirpenski, Mystic Aquarium

www.zoopenguins.org

**ASSOCIATION
OF ZOOS &
AQUARIUMS**

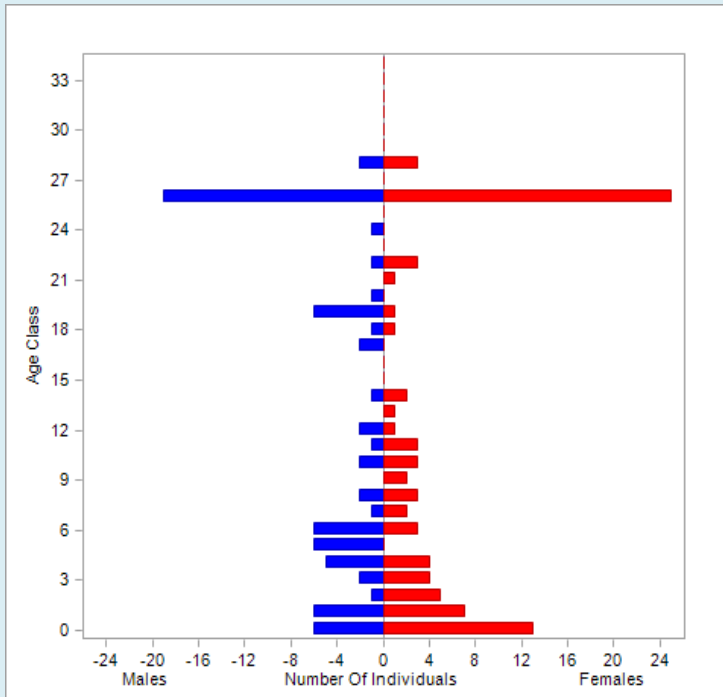
Animal Program Designation

Species	Program Status	Date of Last B&T Plan	Date of Last Studbook	Number of Specimens	Sustainability Score	% Genetic Diversity
African penguin	GREEN SSP	Nov-13	Jun-13	835	97.3	98.8
Humboldt penguin	GREEN SSP	Dec-14	Sep-12	356	95.2	98.36
Magellanic penguin	GREEN SSP	Feb-14	Oct-13	251	93.7	98.33
S. rockhopper penguin	GREEN SSP	Feb-12	Jan-14	328	95.5	98.97
Macaroni penguin	GREEN SSP	Sep-13	Dec-12	165	>90	98.22
King penguin	GREEN SSP	Oct-13	Mar-13	265	95.9	98.91
Gentoo penguin	GREEN SSP	Dec-14	Jan-15	508	>95	98.71
Adelie penguin	GREEN SSP	Jul-12	Jun-14	156	92.0	98.29
Chinstrap penguin	GREEN SSP	Oct-12	Jul-12	147	94.7	97.68
Little blue penguin	YELLOW SSP	Jan-15	Jan-14	64	75.35	95.52
N. rockhopper penguin	RED SSP	Feb-12	Jan-14	34	71	88.8
Emperor penguin	CANDIDATE	NA	NA	31	NA	NA

Gentoo Penguin

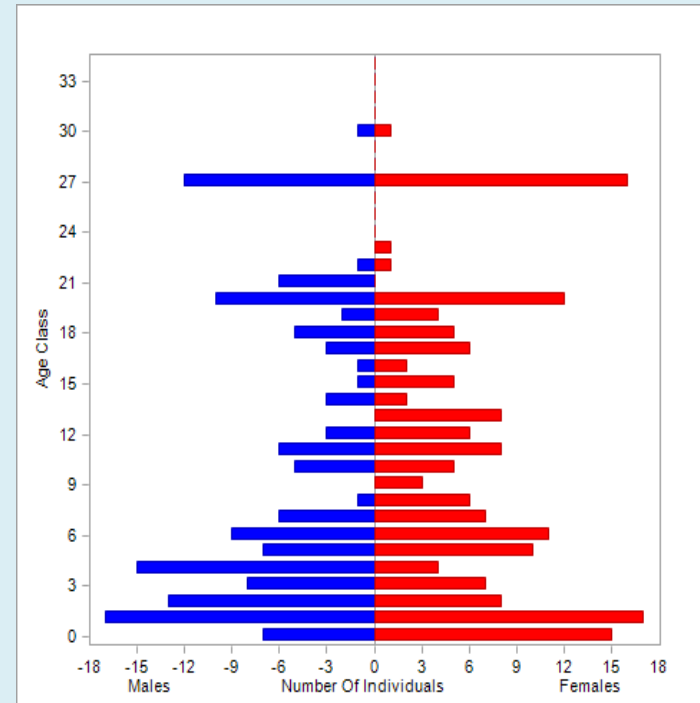
- The two subspecies of gentoo penguins, *Pygoscelis p. papua* and *Pygoscelis p. ellsworthi* have been recommended to be managed as one population.
- There are morphological and behavioral differences between the subspecies.
- However, in practice the species has been primarily managed as two separate populations.
- The TAG is currently working with the PMC to determine the sustainability of managing this species as two separate populations.

Gentoo Penguin



Papua

- 161 (72.82.7) individuals at 13 institutions
- 9.7 hatches/year in the past 10 years
- 1 import and 37 exports over the past 10 years



Ellsworthi

- 312 (139.166.7) individuals at 6 institutions.
- 19.5 hatches/year in the past 10 years
- 0 imports and 19 exports in the past 10 years

Northern Rockhopper Penguin

- **34 penguins (20 males, 14 females) are housed at 5 AZA institutions**
- **The population has remained stable at 0% annual growth over the last decade, with an average of ~1 hatch/year**
- **Was an DERP in last RCP**
- **We will explore working with other regions to see if we can improve the genetics of this population**

Space Survey

107 of 109 institutions responded

Species	2009 Population	2014 Population	2019 Population
Adelie	149	150	160
Emperor	33	32	60
King	241	249	291
Macaroni	150	160	188
S. Rockhopper	341	333	402
N. Rockhopper		33	61
Chinstrap	127	134	180
Gentoo	393	512	484
African	648	845	1209
Little Blue	56	64	148
Humboldt	300	355	539
Magellanic	192	236	317

Advisory Committees

Committee	Chair
Population Sustainability	Colleen Lynch
Conservation	Patty McGill
Education	Elizabeth Mulkerrin
Welfare	Stephanie Allard
Husbandry	Diane Olsen Ric Urban
Veterinarian	Roberta Wallace

Action Plan Highlights

- Incorporate PVA management recommendations into Breeding and Transfer Plans to improve sustainability.
- Be able to provide penguins for all AZA institutions' exhibit needs with a three-year request window.
- Develop a white paper for the use of penguins in outreach and contact programs.
- Compile best practices for environmental enrichment.
- Identify, support, and prioritize research to advance veterinary medicine and animal welfare.
- Develop a list of field projects for each program species that can benefit from financial support by individual AZA institutions.
Encourage institutions holding penguins to support conservation programs.
- Develop an educational tool kit for zoos and aquariums.
- Give presentations at the International Penguin Conference in South Africa in 2016 and New Zealand in 2019



**PENGUIN HUSBANDRY MANUAL
THIRD EDITION**

2005



AMERICAN ZOO AND AQUARIUM ASSOCIATION

- First published in 1994
- Three day workshop funded by AZA Conservation Endowment Fund
- Hard copy that has world-wide distribution.
- Updated twice, the last time in 2005.



**PENGUIN HUSBANDRY MANUAL
THIRD EDITION**

2005



**ASSOCIATION
OF ZOOS
AQUARIUMS &**



**PENGUIN
(Spheniscidae)
CARE MANUAL**

**CREATED BY THE
PENGUIN TAXON
ADVISORY GROUP
IN ASSOCIATION WITH THE
AZA ANIMAL WELFARE
COMMITTEE**

JOINT TAG CHAIR MEETING

EAZA TAG Chair

Pierre De Wit

Zoo Emmen

JAZA TAG Chair

Masanori Kurita

Port of Nagoya Public Aquarium

ZAA TAG Chair

Nick Boyle

Taronga Zoo

Species	AZA Population	EAZA Population	JAZA Population
Adelie	156	4	179
Macaroni	165	50	18
N. Rockhopper	34	77	90
Chinstrap	147	26	80
Little Blue	64	0	30

- Adelie Penguin
- African Penguin
- Chinstrap Penguin
- Gentoo Penguin
- Humboldt Penguin
- King Penguin
- Little Blue Penguin
- Long-crested Rockhopper
- Macaroni Penguin
- Magellanic Penguin
- Short-crested Rockhopper

Penguin TAG

AZA Animal Programs Population Viability Analysis Reports



September 2014

Population Biologists
Brent Johnson and Nicole Clausen





Penguin Conservation

The Penguin TAG Newsletter
Volume 18; Number 2 November 2014



In This Issue

From the Editors	Page 1
Current Threats Facing Yellow-eyed Penguins and New Conservation Initiatives	Page 2
Yellow-eyed Penguin Bill and Cranial Deformities	Page 4
Penguin Rescue - Katiki Point Charitable Trust: 2013/14 Summary of Rescues and Returns	Page 6
Penguin TAG AZA Mid-Year Meeting Summary	Page 7
EAZA Penguin TAG Meeting Summary	Page 10
Ongoing Study: West Nile Virus Maternal Antibody Transmission and Vaccine Protocols In the Humboldt Penguin	Page 12
"Waterpark" for Penguins	Page 13
Penguin Listserv Summaries	Page 14
News and Updates	Page 17
Recommended References	Page 19
Websites We Like	Page 23
Events and Announcements	Page 24

Penguin Conservation is supported by the Penguin TAG and published electronically bi-annually. For subscription, article submission, and all other inquiries contact the editors.

Editors: Linda Henry, Linda.Henry@SeaWorld.com
Jessica Jozwiak, jjozwiak@detroitzoo.org

Archived issues are available on the Penguin TAG website: www.zoopenguins.org

Visit us on Facebook: <http://www.facebook.com/PenguinTAG>

ASSOCIATION
OF ZOO &
AQUARIUMS

- Started in 1993 and published through 2000
- Started publishing again in 2010
- Published bi-annually with two editions in 2014
- Combination zoo and field articles.
- Linda Henry and Jessica Jozwiak are the editors

INTERNATIONAL PENGUIN CONFERENCE

SAVE THE DATE

Cape Town, South Africa

5-9 September 2016

International Scientific Committee:

Peter Barham (University of Bristol)

Dee Boersma (University of Washington)

Pablo Garcia Borboroglu (Global Penguin Society/CONICET-Argentina)

Lloyd Davis (University of Otago)

Sue Murray (Yellow-Eyed Penguin Trust)

Phil Trathan (British Antarctic Survey)

Heather Urquhart (New England Aquarium)

Eric Woehler (University of Tasmania)

Corners Limited
is the proud sponsor of the
2015 ASAG Workshops



Avian Scientific Advisory Group