

Reeve's Pheasant

Syrmaticus reevesii

Family: Phasianidae Genus: *Syrmaticus*
Recognized Subspecies: 0, Monotypic
Conservation status: Vulnerable
Wild Pop. Trend: Decreasing
CITES Appendix: Not Listed
USFWS: Not Listed

Range: China endemic

Conservation Concern: The Reeve's Pheasant is listed as Vulnerable by the IUCN. The large tail feathers of the male of this species have been valued throughout history as status symbols and ornaments and undoubtedly were a source of population decline. Loss of habitat and hunting have been the causes to the continued decline of this species, and it is feared this species is more threatened than thought.

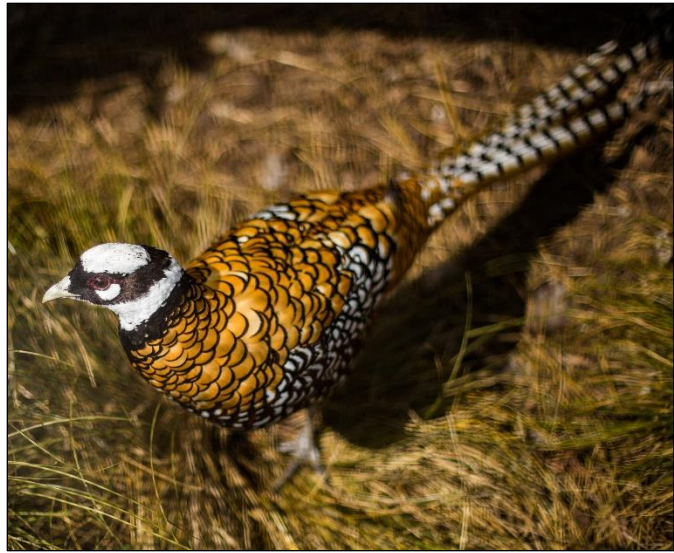


Photo credit: Toledo Zoo

Species Account: The Reeve's Pheasant is one of five species in the genus *Syrmaticus* and is currently considered the most threatened of the genus. This species has some of the largest tail feathers among the pheasants and is popular with guests due to its striking appearance. In the wild, this species ranges in temperate evergreen forests in China and has also been introduced into many regions of the world as a gamebird for hunting. The status of the feral population is not well known but likely not sizeable.

AZA Role: This is a newly recommended species by the TAG. This species is a large, attractive, cold-hardy pheasant species that, unlike the other large Pheasant species, can tolerate colder temperatures.

TAG Monitored Goals: The Reeve's Pheasant is a managed population in EAZA. The birds in the U.S. private sector and the few now housed in AZA collections are likely genetically distinct from EAZA. Over this RCP period, the TAG wants to increase the numbers of this species held in AZA collections as a resource for the future. Imports from China are not possible and recruiting new founders from the wild is impossible. As such, the two regions (AZA and EAZA) will have to depend on each other for exchanges to establish this species in our collections. To begin an AZA population, birds will need to be acquired from multiple sources from the private sector, much like the TAG did during the last RCP period for the Edwards's Pheasant.

Educational Emphasis

- Sexual dimorphism
- Habitat fragmentation
- Plume trade

AZA Connections: The following table is not a guide of what the Reeve's Pheasant can be housed with (although many of these are a possibility), but rather it is meant to show the range connections between other AZA recommended program species.



Reeve's chicks
Photo credit: Toledo Zoo

Reeve's Pheasant <i>Syrnaticus reevesii</i> recommended species by other TAGs within species range.				
Common name	Scientific name	TAG	Program	Conservation status
Collared Finch-billed Bulbul	<i>Spizixos semitorques</i>	PACCT TAG	Candidate	Least Concern
Chinese Hwamei	<i>Garrulax canorus</i>	PACCT TAG	Candidate	Least Concern
Red-billed Leiothrix	<i>Leiothrix lutea</i>	PACCT TAG	Yellow SSP	Least Concern
Azure-winged Magpie	<i>Cyanopica cyanus</i>	PACCT TAG	Yellow SSP	Least Concern
Red-billed Blue Magpie	<i>Urocissa erythroryncha</i>	PACCT TAG	Red SSP	Least Concern
Swan Goose	<i>Anser cygnoid</i>	Anseriformes TAG	Yellow SSP	Vulnerable
Lesser White-fronted Goose	<i>Anser erythropus</i>	Anseriformes TAG	Phase-in	Vulnerable
Northern Shoveler	<i>Anas clypeata</i>	Anseriformes TAG	Raft	Least Concern
Baikal Teal	<i>Anas formosa</i>	Anseriformes TAG	Raft	Least Concern
Common Shelduck	<i>Tadorna tadorna</i>	Anseriformes TAG	Raft	Least Concern
Ruddy Shelduck	<i>Tadorna ferruginea</i>	Anseriformes TAG	Raft	Least Concern
Mandrian Duck	<i>Aix galericulata</i>	Anseriformes TAG	Raft	Least Concern
Common Goldeneye	<i>Bucephala clangula</i>	Anseriformes TAG	Raft	Least Concern
Smew	<i>Mergellus albellus</i>	Anseriformes TAG	Raft	Least Concern
Tufted Duck	<i>Aythya fuligula</i>	Anseriformes TAG	Raft	Least Concern
Baer's Pochard	<i>Aythya baeri</i>	Anseriformes TAG	Phase-in	Critically Endangered

**Disclaimer: this information was collected in 2017. If you have interest in any of these species, contact the perspective TAGs. All range overlap information was determined using the IUCN Red List range maps.

Conservation priority species that share the same range:

- Chinese Giant Salamander *Andrias davidianus*
- Giant Panda *Ailuropoda melanoleuca*
- Takin *Budorcas taxicolor*

If your institution supports a field project with one of these species, check if your conservation partner is observing the Reeve's Pheasant in their study/ field site. If your Zoo displays one of the following species, the addition of an aviary for the Reeve's Pheasant can illustrate the diversity of a biome at your institution and highlight a vulnerable bird.



Reeve's Pheasant at Gladys Porter Zoo
Photo credit: Joel Satore