



# Ratite Transportation

Carolynn Atherton, Curator of Birds

Audubon Zoo

[catherton@auduboninstitute.org](mailto:catherton@auduboninstitute.org)

March 29, 2018

*speaker notes in italics*



# Looking Online



Apparently you can fit an emu in the back of a Malibu...



Or a cop car!

Neither are good options

# Best-Case Scenarios

Transport as eggs

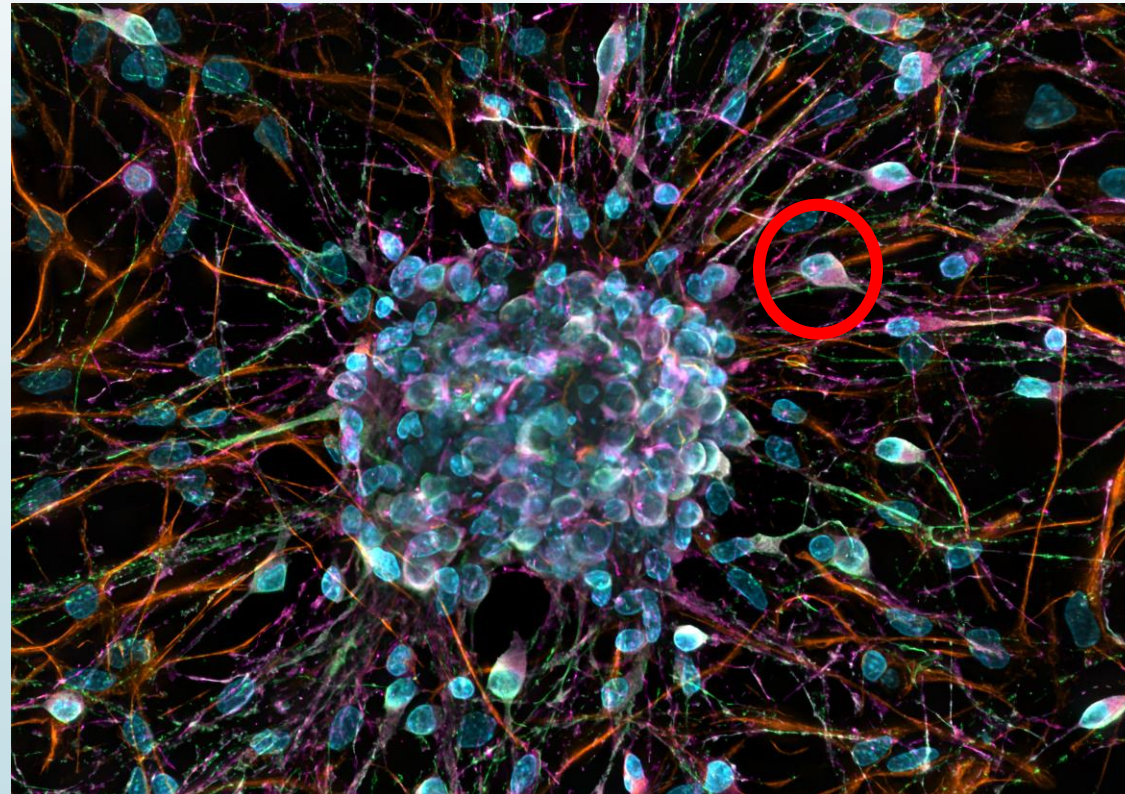


Transport as chicks



But if neither of these is an option...Start from scratch!

“Ratites only have two brain cells, and only one fires.”  
-Steve Sarro



A dark grey arrow points to the right from the left edge of the slide. Below it, several thin, curved lines in shades of blue and grey sweep across the left side of the slide.

# Emu Transport by Trailer

- ▶ Transporting two emu to Audubon from Alexandria
- ▶ Approximately four hour drive
- ▶ Determined stock trailer was safest mode of transport

A dark blue arrow points to the right from the left edge of the slide. Below it, several thin, curved lines in shades of blue and grey sweep across the left side of the slide.

# Preparing the Trailer

- ▶ Wanted to divide the space
- ▶ Make the walls safe
- ▶ Have a safe substrate
- ▶ Make sure appendages remained inside the trailer at all times

- Had a four-horse trailer that needed to be divided into quarters
  - Installed a plywood divider board
- Padded the wood and the walls
- Covered the side slots on the trailer
- Used wood chips for substrate





# The Plan

- ▶ Took a Hoofstock person to drive the trailer
- ▶ Upon arrival, discussed how to load the birds
- ▶ Volunteered to 'frog-walk' the birds to the trailer
  - ▶ Definition: To embrace the bird while exerting pressure to walk them in the desired direction
- ▶ Other staff acted as human barriers





# The Execution

- ▶ Problem #1:
  - ▶ These emus had never heard of 'frog-walking'
  - ▶ They were not used to being in close proximity to people
  - ▶ They were a little crazy!
- ▶ Solutions Tried:
  - ▶ More people to herd
  - ▶ Attempted to blindfold with a sock
  - ▶ Attempted to push with bully-boards



Male: Lifted from a sitting position.



Female: Convinced to enter backwards while jumping.



Safe arrival. The vet was able to check them out on the trailer. They were then banded and ready to go into quarantine.

# Out of the Trailer!



Ladies first!

# The Rhea Disaster...



# Preparing the Crate:



Bubble wrap on  
sides



Soft cloth lining



Bubbles on  
ceiling!



# Finished Product



Complete with  
substrate

Adding a few  
meds



And wait a  
bit...





(Not really the crate, but you get the idea...)

Tried again later after crate revisions...



(and more drugs)

And the winner is:



# Questions?

► Suggestions?

# Corners Limited

is the proud sponsor of the  
2018 ASAG Workshops



Avian Scientific Advisory Group

