

DETROIT ZOOLOGICAL SOCIETY®

CONSERVATION AT EVERY LEVEL:

Addressing bird collisions at the
Detroit Zoo

Bonnie Van Dam
Associate Curator of Birds
bvandam@dzs.org

speaker notes in italics



DETROIT ZOO ♦ BELLE ISLE NATURE CENTER

DZS AVIAN CONSERVATION INITIATIVES

- **The Detroit Zoological Society (DZS) facilitates and contributes to several bird conservation programs, locally and internationally.**



DZS AVIAN CONSERVATION INITIATIVES

- **DZS also believes it's our responsibility to take care of birds that are migrating and/or are native residents, not just those that are Zoo residents.**

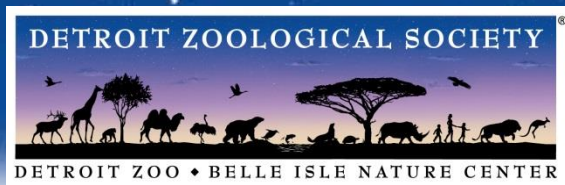




Local and migrating bird residents, whether they are of conservation concern or not should be protected from glass collisions. Scientists estimate that billions of North American birds every year meet their untimely deaths when they collide with glass (Klem, 1990; Machtans et al., 2013; Loss et al., 2014).



Photo: Rick Haines



The Detroit Zoo opened in 1928 and has always been known for its moated habitats.

AUSTRALIAN OUTBACK ADVENTURE

- Red Kangaroo
- Wallaby

AMERICAN GRASSLANDS

- Beaver, Skunk and Grizzly
- Cotton Family Wolf Wilderness
- Beaver
- Prairie-dog
- Wild eagle
- Wolverine
- Antelope
- Bush-dog
- Farm animals
- South American animals
- Rhino, Vulture
- Emu, Guanaco
- Human Life/ picnic site
- Digger (Dart) (seasonal)
- Arctic Outpost (seasonal)
- First Aid
- Park Safety
- Lost and Found

AFRICAN GRASSLANDS

- Gazelle
- Antelope
- Geny's zebra
- Warbling
- Eland
- Rhinoceros
- Giraffe
- Snow monkey
- Lion
- Alouatta birds
- Cran, Chimpanzee, Oribi, Spotted, Stag, Vulture
- Mommy and Me Nursing Station
- Arctic Outpost picnic site
- Arctic Outpost (seasonal)
- Digger (Dart) (seasonal)
- Swamp (seasonal)
- Trudley Pond (seasonal)
- Designated smoking area

ARCTIC RING OF LIFE

- Polar bear
- Arctic fox
- Seal
- Northern Gallery
- Exposition Station

AFRICAN FOREST

- Great Apes of Harambee
- Gorilla, Chim, Chimpanzee

ASIAN FOREST

- Asian tiger
- Red panda
- Lemur
- Caracal
- Asian wild horse
- Falloon deer
- Red Panda picnic site
- American Camp Island (seasonal)

CONSERVATION CAMPUS

- Wildlife Interpretive Gallery
- Butterfly Garden
- Wildlife & Wetland
- Free Flight Aviary
- Birds of Prey Conservation Center
- National Amphibian Conservation Center
- Edward Mangelsen Sr. River Otter Habitat
- Jane and Frank Winchell Beaver Habitat
- Cotton Family Wetlands
- Hidden Regatta Conservation Center
- Horned Lizard (seasonal)
- Asian Pigmy (seasonal)
- Main picnic site
- Other picnic site
- Papayam picnic site
- Leahy-Pollack picnic site
- Arctic Café
- Alton Market (seasonal)
- Pan Green (seasonal)
- Detroit Pigroom (seasonal)
- Boonville Station (seasonal)
- Outdoor Market
- Dollar Passage Gifts

MAP KEY

- Outer Loop 1.7 Miles
- Restroom
- Family Restroom
- Mommy and Me Nursing Station
- Food (seasonal) (seasonal) picnic area
- Picnic Site
- Gift Shop
- Stroller/Wagon Rental
- ATM
- First Aid/ Lost and Found
- Tornado Shelter
- Playground
- Train Station
- Drinking Fountain
- Drinking Fountain and Water Bottle Filling Station
- AED (Automated External Defibrillator)

Accessibility

Visitors are often available to assist in accommodating guests with disabilities. Please contact us in advance of your visit at (248) 343-5717 ext. 3750. While buildings and most outdoor exhibits are wheelchair accessible, there are some hilly areas. Walkways are a combination of paved, gravel and wheelchair surfaces.

Service animals are permitted in all public areas of the Zoo except the Wildlife & Wetland Free Flight Aviary and Australian Outback Adventure due to the free-ranging animals.

First Aid, Lost Visitors, Lost and Found

Contact our Park Safety personnel at (248) 343-5717. The Park Safety office is located near Hudson Fountain.

Strollers, Wagons and Wheelchairs

Strollers, wagons and wheelchairs are available for rent by the Chrysler Museum Station and near the Alice Station seasonally.

Smoking Policy

In order to provide a safe and healthy environment for both the animals and our guests, smoking is permitted only in the designated smoking area near the Arctic Outpost picnic site.

PLEASE RECYCLE THIS MAP.

You can also choose to use our INTERACTIVE MAP: dzoo.org/map

Map of Your DETROIT ZOO
Celebrating and Saving Wildlife

GLASS

- Like most zoos, DZS also uses glass to provide an up-close and personal view of the wildlife.



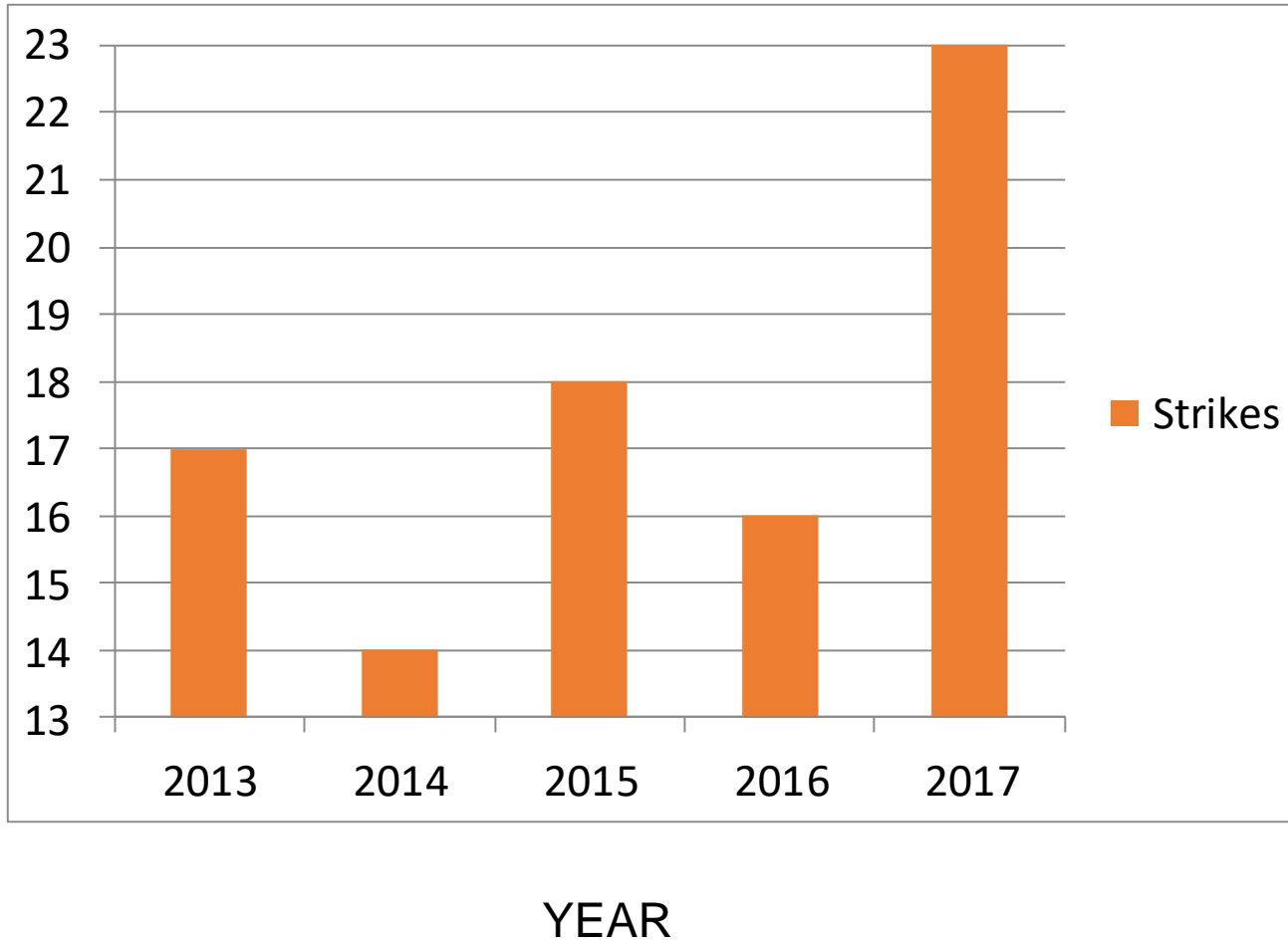
2013

- DZS started a tracking/reporting system for bird collisions on property.
- Originally a staff e-mail was used to reach out to employees urging them to contact bird staff and report collisions/deaths.

1	A	B	C	D	E	F	G	H	I	J	K
2	Tracking Bird Strikes - Zoofari Market -2017										
3	Date	Reported by	Number of Collisions	Approx. Time	Weather Conditions	Bird Species or Unknown	Male, Female, Juvenile or Unknown	Migration Season (Yes or No)	Features that may contribute to strikes	Any corrective actions that were taken	Additional Note
4											
5											
6											
7											
8											
9											
10											
11											
12											
13											
14											
15											
16											
17											
18											
19											
20											
21											
22											
23											
24											
25											
26											
27											
28											
29											
30											
31											
32											
33											
34											
35											
36											



REPORTING



TO DATE

- We have five graphic displays in various areas of the Zoo, and bird safety pamphlets available to the public in several areas of the Zoo.
- We sell ABC BirdTape in gift shop, have used this product in various areas.
- We've used Ornilux UV glass and fritted glass.
- We've used CollidEscape window film and FeatherFriendly 3M collision dots on various windows.
- We train all employees/volunteers to recognize and report collisions.
- During special events, we teach the public about collisions and allow them to make decals to take home.
- Articles, website blogs, press release.
- Christine Sheppard (American Bird Conservancy) consultation in 2015.



DECALS

Typical first line of defense – decals, decals, decals.

- Decals are one of the quickest, easiest methods but must be replaced often.
- They aren't the most effective if they aren't applied using the 4" by 2" rule.
- Some folks believe they shouldn't be used at all.



=



=



DECALS CONTINUED

- But.....they are conversation starters, the public asks “what and why”.
- Can be made by staff, children, volunteers and the public (Earth Day).



2015-2016

The Zoo used decals and ABC BirdTape.



FORD EDUCATION CENTER

- The Ford Education Center was built in 2005.
- It is a two-story building with a beautiful courtyard and over 250 windows.

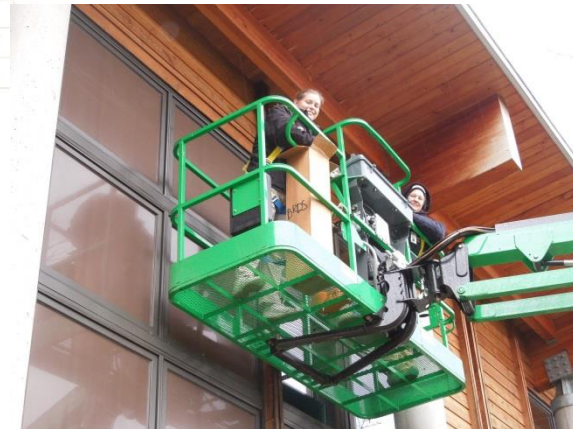


2015-2017

A budget was put together to purchase CollidEscape for various areas in the Zoo.



- Using an in-house utility crew we installed film on 95% of the Ford Education Center in 2016 and then completed in 2017.



HOLDEN REPTILE CONSERVATION CENTER - 2017



2017 ORGANIZATIONAL RENEWAL DAYS

DZS employee development days allowed staff to participate in bird collision prevention.

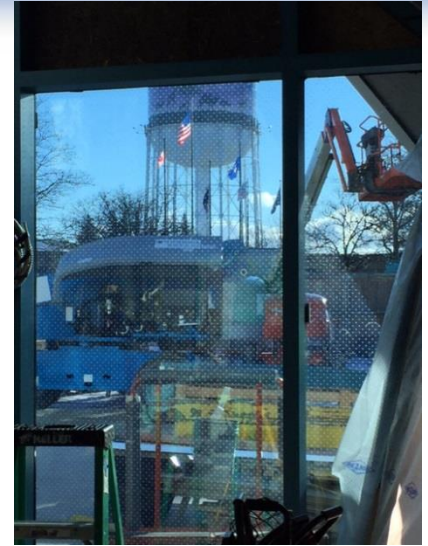


DETROIT ZOOLOGICAL SOCIETY ALL EMPLOYEE
O.R. DAY
ORGANIZATIONAL RENEWAL

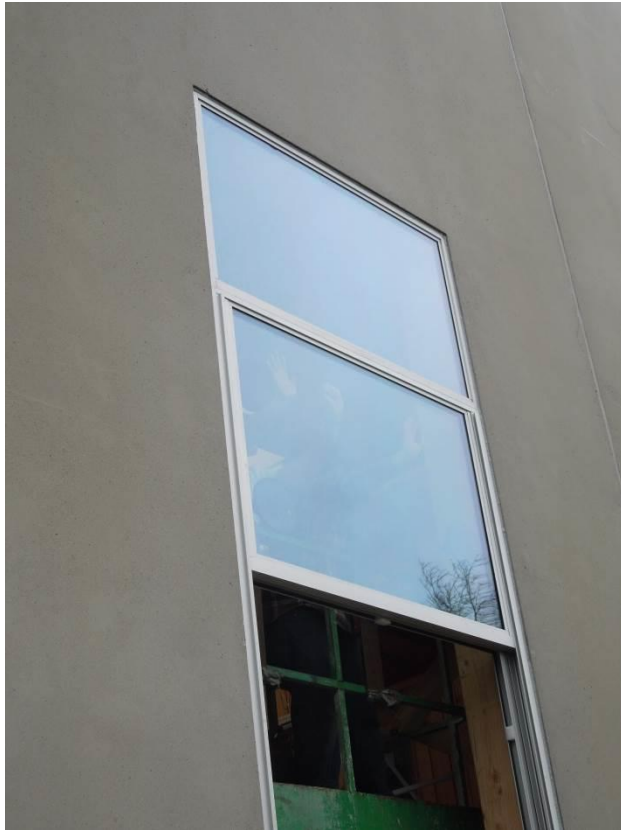


BIRD FRIENDLY GLASS

- Polk Penguin Conservation Center opened in 2016.
- First building at the Detroit Zoo to have bird friendly glass.



GIRAFFE HABITAT EXPANSION - 2017



WOLF HABITAT - 2017

FeatherFriendly bird dots applied to five large viewing windows.



BELLE ISLE NATURE CENTER – 2017



IN PROGRESS

- **DZS is a partner in the recently formed Metro Detroit Urban Bird Treaty (UBT).**
 - **We will be promoting bird-friendly buildings and planting a Backyards for Wildlife on Zoo grounds (bird collisions will be addressed).**
- **Working with the Detroit Audubon Society on bird collision monitoring efforts and promoting “Project Safe Passage Great Lakes” mid-March through May and mid-August through October.**



Celebrating and Saving Wildlife

Please help us gather information that will be used to prevent bird-glass collisions on property.

I just witnessed a bird collide with glass.
WHAT DO I DO?

ALIVE



DEAD

I'm alive but I am injured.

Stunned and then flies away.

Contact Bird Dept.
Radio Birds 12, 11, 22 or 21.
Stay with the bird until they arrive.

Contact Bird Dept.
Radio Birds 12, 11, 22 or 21.
Stay with the bird until they arrive.

Contact Bird Dept.
Radio Birds 12, 11, 22, or 21.
You will be requested to provide details.

QUESTIONS??

- Bonnie Van Dam (bvandam@dzs.org)
- CollidEscape Window Film (www.collidescape.org)
- Feather Friendly 3M Dots (www.conveniencegroup.com)
- ABC BirdTape (www.CollidEscape.org/abc-birdtape)
- Ornilux Bird Protection Glass (ornilux.com)
- American Sealants Inc. (amsealinc.com)

Corners Limited

is the proud sponsor of the

2018 ASAG Workshops



Avian Scientific Advisory Group