



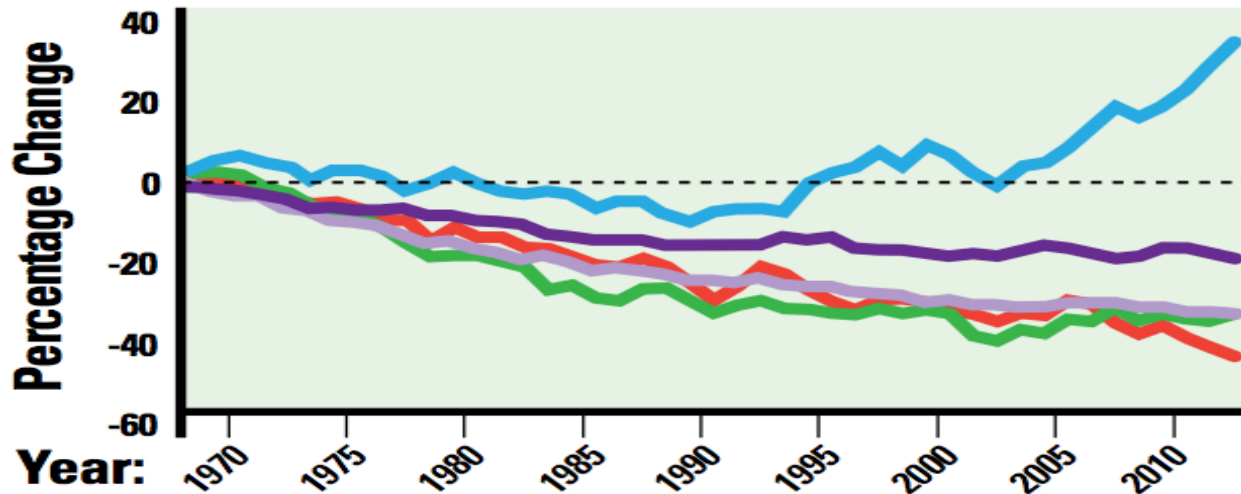
Rally 'round the birds!

Mike Kreger, Ph.D., VP Conservation, Columbus Zoo and Aquarium
michael.kreger@columbuszoo.org



BIRD POPULATION INDICATORS IN FIVE INLAND HABITATS

● Grasslands ● Aridlands ● Eastern Forests ● Western Forests ● Wetlands



BBS Summary Data

Neotropical migrants (136 species)

47% significant negative trends; 44 spp had annual declines > 1.0%

Short-distance migrants (107 species)

47% significant negative trends; 37 spp had annual declines > 1.0%



The 20 fastest declining neotropical migrants

-Data from 1966-2015
-Numbers are percent decline per year
-High representation of aerial insectivores, grassland birds, and eastern woodland breeders.

Bank Swallow	-4.4
Black Swift	-3.4
Allen's Hummingbird	-3.3
Olive-sided Flycatcher	-2.9
Chimney Swift	-2.5
Cerulean Warbler	-2.5
Grasshopper Sparrow	-2.4
Chuck-will's-widow	-2.3
Golden-winged Warbler	-2.2
Lark Bunting	-2.1
Bobolink	-2.0
Canada Warbler	-2.0
Rufous Hummingbird	-1.9
Wood Thrush	-1.9
Common Nighthawk	-1.9
Prairie Warbler	-1.8
Baird's Sparrow	-1.8
Cape May Warbler	-1.7
Wilson's Warbler	-1.7
Least Flycatcher	-1.7

Why North American migratory birds?

- Conservation need
- Strong network of partners
- We can do more than inspire – we can take direct action
- Economic
- Zoos are conservation organizations!



Rally 'round the birds!

Mike Kreger, Ph.D., VP Conservation, Columbus Zoo and Aquarium
michael.kreger@columbuszoo.org

Outreach



Rally 'round the birds!



Rally 'round the birds!



Rally 'round the birds!



Science



THE MOTUS TOWER - Tracking birds, bats, and bugs...

What is Motus?

- The Motus Wildlife Tracking System is a world-wide research network that uses advanced technology to track the movement and behavior of birds, bats, and large insects.
- The Columbus Zoo and Aquarium and The Wilds have both constructed Motus Towers (receiving stations) as partners in this network.
- Why call it the Motus Tower? Appropriately named, the term "motus" is the Latin word for "movement".

How does the Motus Wildlife Tracking System work?

- Accurately tracking birds, bats, and large insects can be tricky! Individual animals are affixed with digitally-encoded radio transmitters. The transmitters' signals are detected by receiving towers constructed across the United States, Canada and other participating countries and communicated to a central database. Researchers can learn a lot about migratory behaviors from this coordinated information.
- Our Motus Tower has been mounted on the back wall of Heert of Africa's Hezari Restaurant - one of the highest points in the zoo. Although it is not directly visible to guests, this location will enable the tower to pick up signals from animals up to 10 miles away.

The information we collect is used to answer complex questions about wildlife migrations and can contribute to saving your Ohio wildlife.

For more information on the Motus Wildlife Tracking System and towers, please visit www.motus.org

Motus Tower
Made Possible by
Dr. Bernard F. Master
To participate in the Bird Studies
Canada Migratory Bird Project

Rally 'round the birds!

