

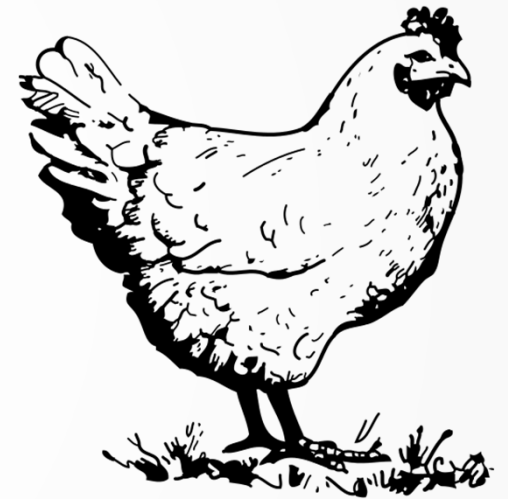
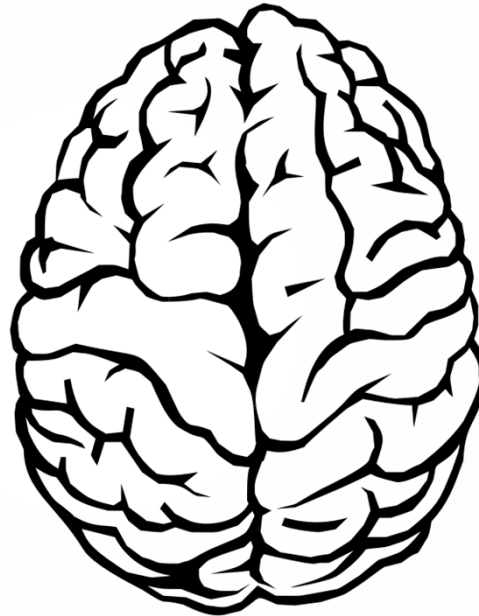
State of the AZA Galliformes

Mid-Year 2023, OKC

Christopher Holmes, San Diego Zoo
Galliformes TAG Chair
cholmes@sdzwa.org



This is your
Brain



This is your brain on
Reimagination



Before/During Reimagination

- The TAG had 11 SSPs.
- A further 10 species were TAG Monitored.
- The recommendations of the TAG in the 2011 and 2018 RCPs were largely weighted on conservation status.
- This occurred mainly because before the 2011 RCP the recommendations were outdated and many of the programs had gone dormant, so we needed a place to start.



After Reimagination

- The TAGs programs did really well so far through this process!
- Of the 11 managed programs we had only 3 that fell out of management models! But all three are finding new ways to carry on.
- Congo Peafowl
- Attwater's Prairie Chicken
- Wattled Curassow
- In total we have 3 Signature SSPs, 5 Provisional SSPs, 2 Studbooks, and 1 TAG Monitored (EEP).





Celebrating Successes

Your 2023 Galliformes Programs

Our Milestones since 2011

- ▶ All populations whether they grew beyond their 2011 population numbers or not are healthier (younger populations and reared appropriately).
- ▶ Retained and grew knowledge in AZA on husbandry.
- ▶ Greater interest in this group of birds for display and conservation programs.



Galliformes of South America

- ▶ Blue-billed Curassow
- ▶ Helmeted Curassow
- ▶ Wattled Curassow



Blue-billed Curassow

- 2011 RCP- 13.11 (25)
- Now- 43.32.1 (75)
- Signature SSP
- Critically Endangered
- Chris Holmes





White Oak Conservation Center

Helmeted Curassow

- ▶ 2011 RCP-18.16.4 (38)
- ▶ Now- 30.28 (60)
- ▶ Signature SSP
- ▶ Endangered
- ▶ Kelly Pardy





Woodland Park Zoo

Wattled Curassow

- ▶ 2011 RCP- 9.10 (19)
- ▶ Now- 10.11 (21)
- ▶ [Studbook](#)
- ▶ [Endangered](#)
- ▶ [Kelly Pardy](#)



Houston Zoo



Galliformes of Asia

- ▶ Cabot's Tragopan
- ▶ Vietnam Pheasant
- ▶ Palawan-Peacock-pheasant
- ▶ Great Argus Pheasant
- ▶ Crested Wood-partridge



Vietnam Pheasant

- 2011 RCP- 3.4 (7)
- Now- 40.29 (69)
- Signature SSP
- Critically Endangered
- Charlotte Carruth
new program leader

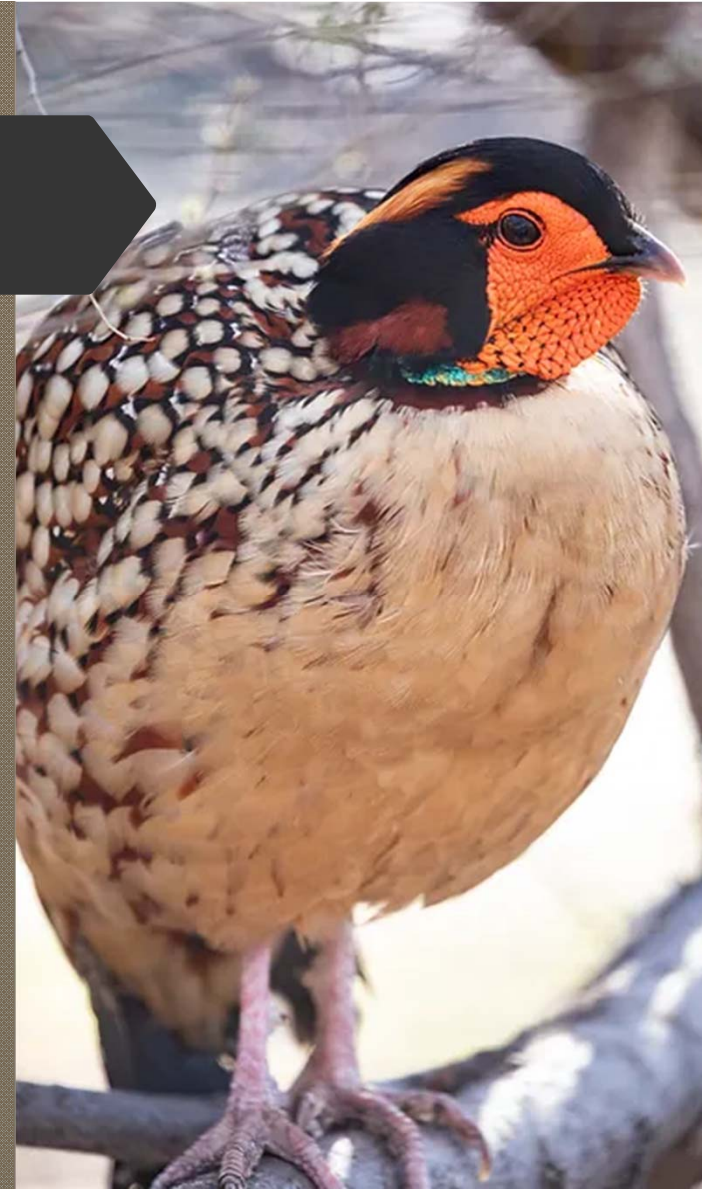


Zoo Berlin



Cabot's Tragopan

- ▶ 2011 RCP- 12.13.2 (27)
- ▶ Now- 12.15 (27)
- ▶ Provisional SSP
- ▶ Vulnerable in the wild and in our collections.
- ▶ Chuck Cerbini





Buttonwood Park Zoo

Great Argus Pheasant

- ▶ 2011 RCP- 35.41.6 (82)
- ▶ Now- 33.33.2 (68)
- ▶ Provisional SSP
- ▶ **Vulnerable**
- ▶ Robyn Russnogle



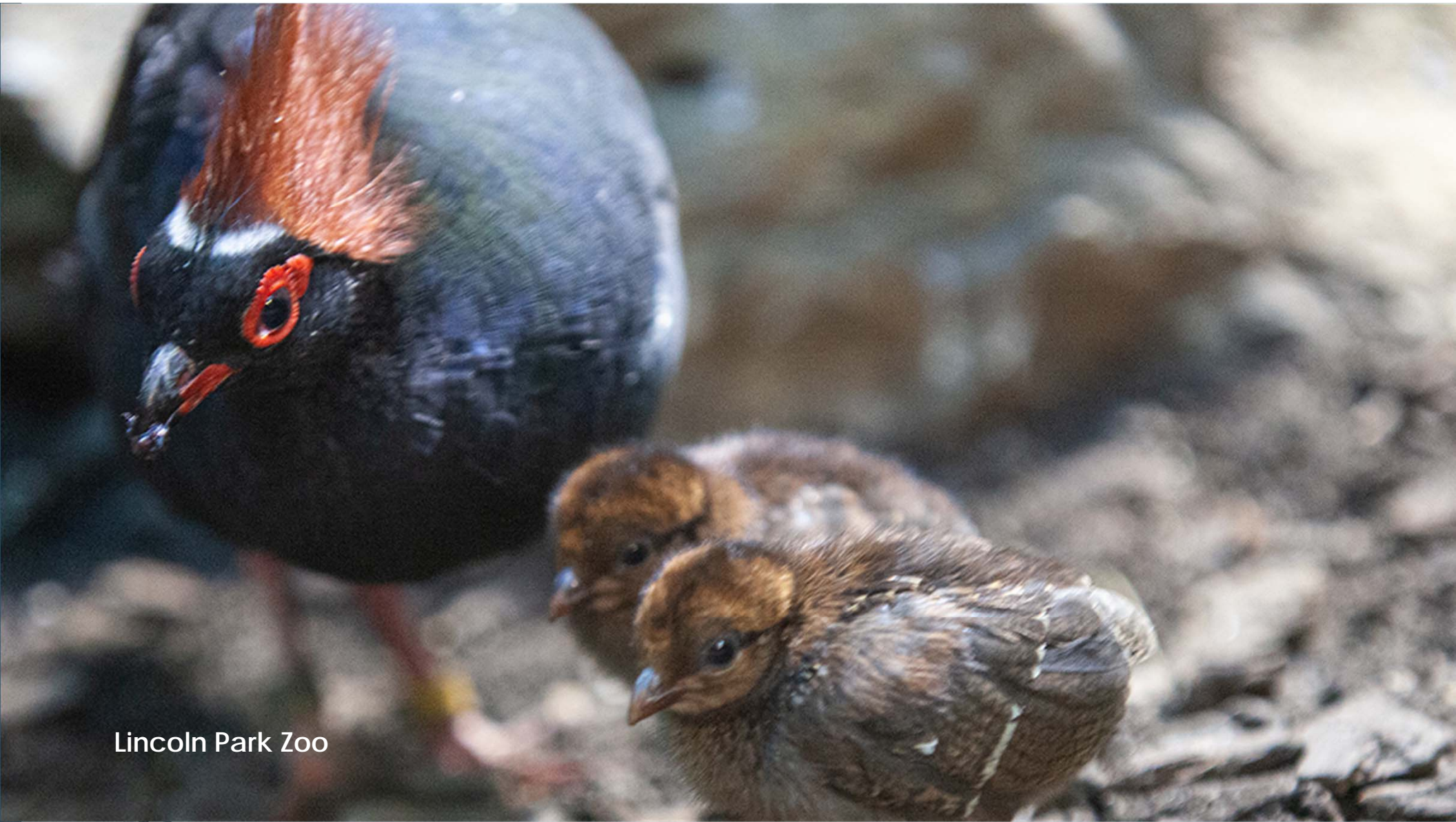


Chester Zoo

Crested Wood Partridge

- ▶ 2011 RCP- 100.108.81 (289)
- ▶ 2021 BTP- 84.85.20 (189)
- ▶ Now- 134.136.16 (286) From ZIMS.
- ▶ Provisional SSP
- ▶ **Vulnerable**
- ▶ Daniel Brands

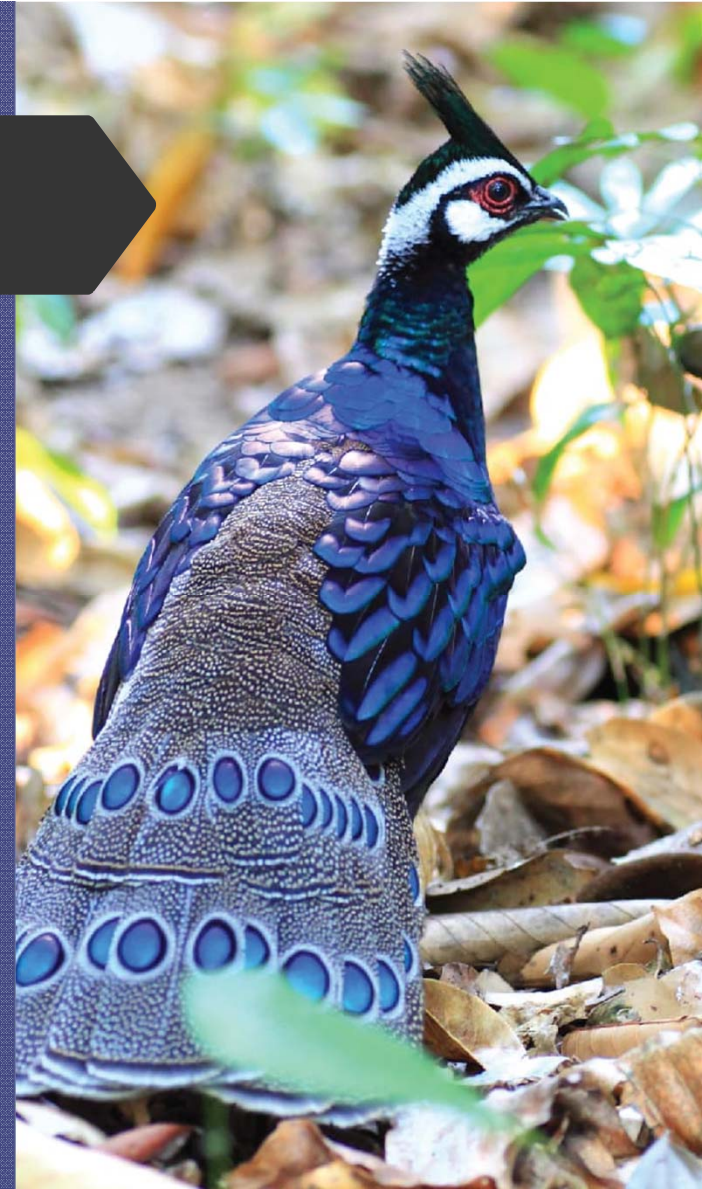




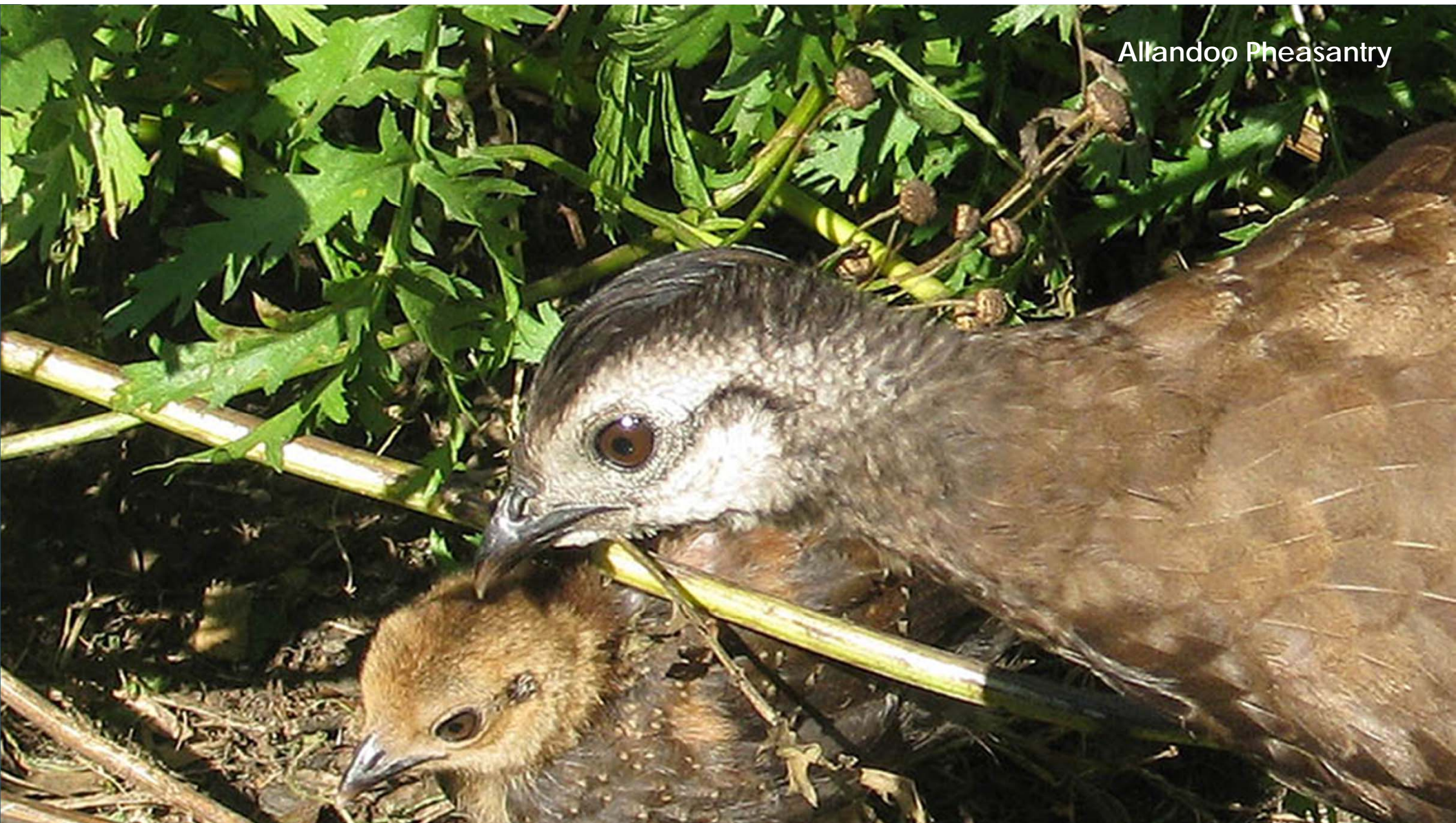
Lincoln Park Zoo

Palawan Peacock-pheasant

- 2011 RCP- 26.17.3 (46)
- Now- 19.21.1 (41)
- Provisional SSP
- Vulnerable
- Cynthia Barr
new program leader



Allandoo Pheasantry



Galliformes of Africa

- Eastern-crested Guineafowl
- Congo Peafowl



Eastern Crested Guineafowl

- ▶ 2011 RCP- 33.23.9 (65)
- ▶ Now- 34.30.2 (66)
- ▶ Provisional SSP
- ▶ Least Concern
- ▶ Maureen Cleary



© 2009 - Rick van der Weijde - Pbase.com/co



Chester Zoo

Congo Peafowl

- ▶ 2011 RCP- 21.12.6 (39)
- ▶ Now- 14.10 (25)
- ▶ TAG Monitored/EEP
- ▶ Vulnerable
- ▶ Jan Dams



Los Angeles Zoo



Galliformes of North America

- Attwater's Prairie Chicken Studbook/SAFE



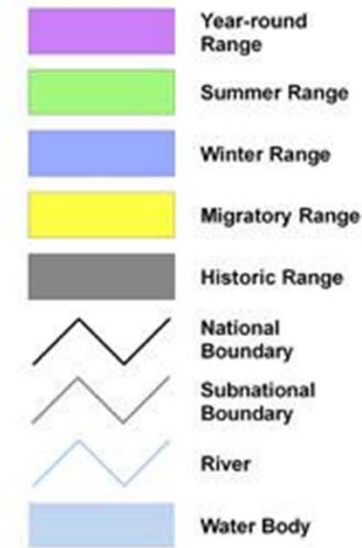
Attwater's Prairie Chicken

- ▶ 2011 RCP- 72.62.18 (152)
- ▶ Now- 71.71 (BTP)
- ▶ Studbook working on SAFE
- ▶ USFWS Endangered
- ▶ Near Threatened at Species level
- ▶ Kelly Pardy



But.....This is the bird's range.

It is hoped that institutions through-out the historic range of the Greater Prairie Chicken will want to join the SAFE.



What's at stake

- ▶ Only 1% of Texas Coastal prairie remains. This is one of the most endangered biomes on earth.
- ▶ The Attwater's National Refuge protects 10,528 acres of pristine Texas Coastal Prairie.
- ▶ This refuge area is an important site for migrating songbirds.
- ▶ Since 1970 53% of grassland birds have declined.



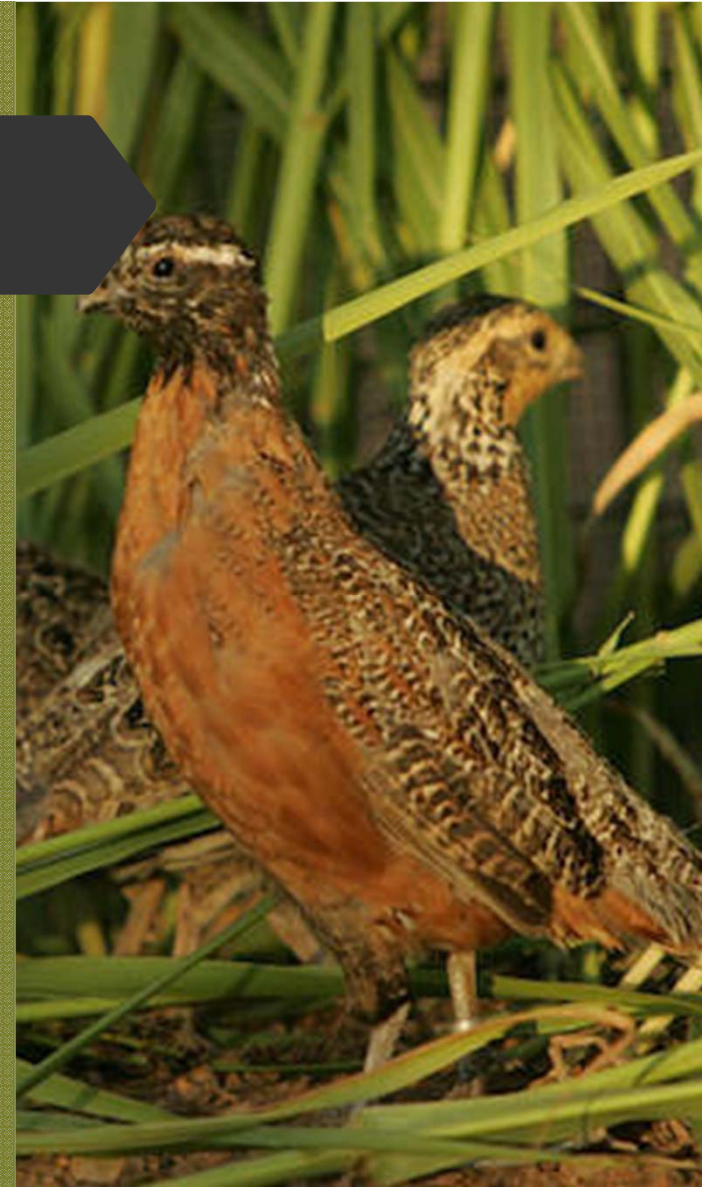


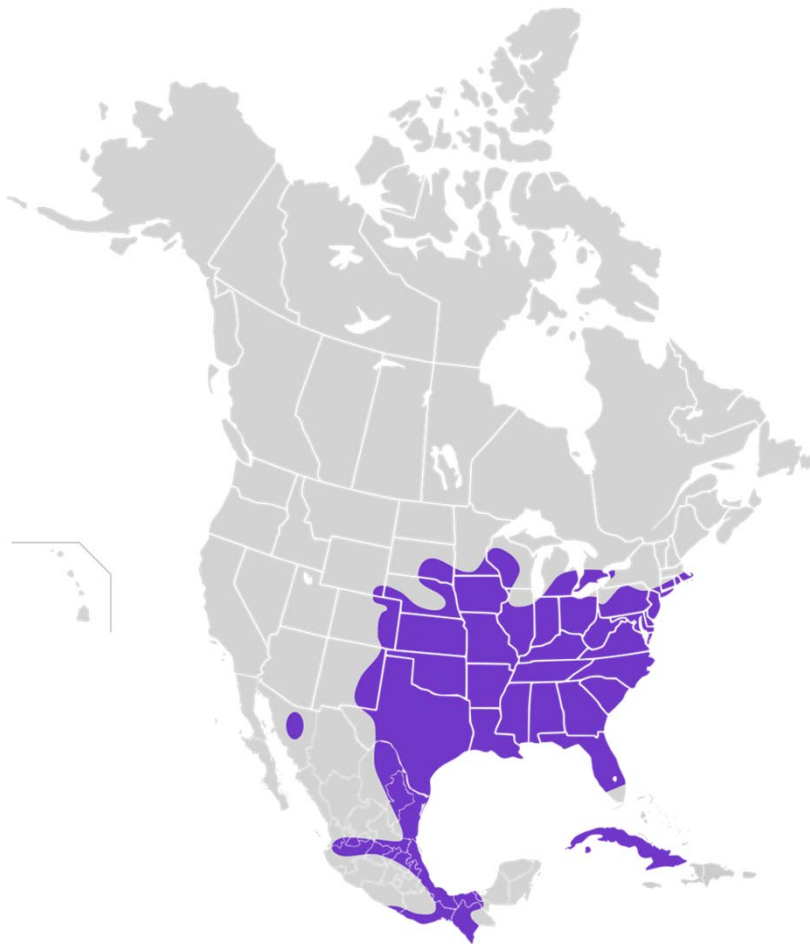
Houston Zoo



North America Special Topic

- ▶ Masked Bobwhite
- ▶ USFWS Recovery Program would still like to work with AZA.
- ▶ More of a situation where AZA would house an assurance population not a release population.
- ▶ Good fit for native bird exhibit spaces!





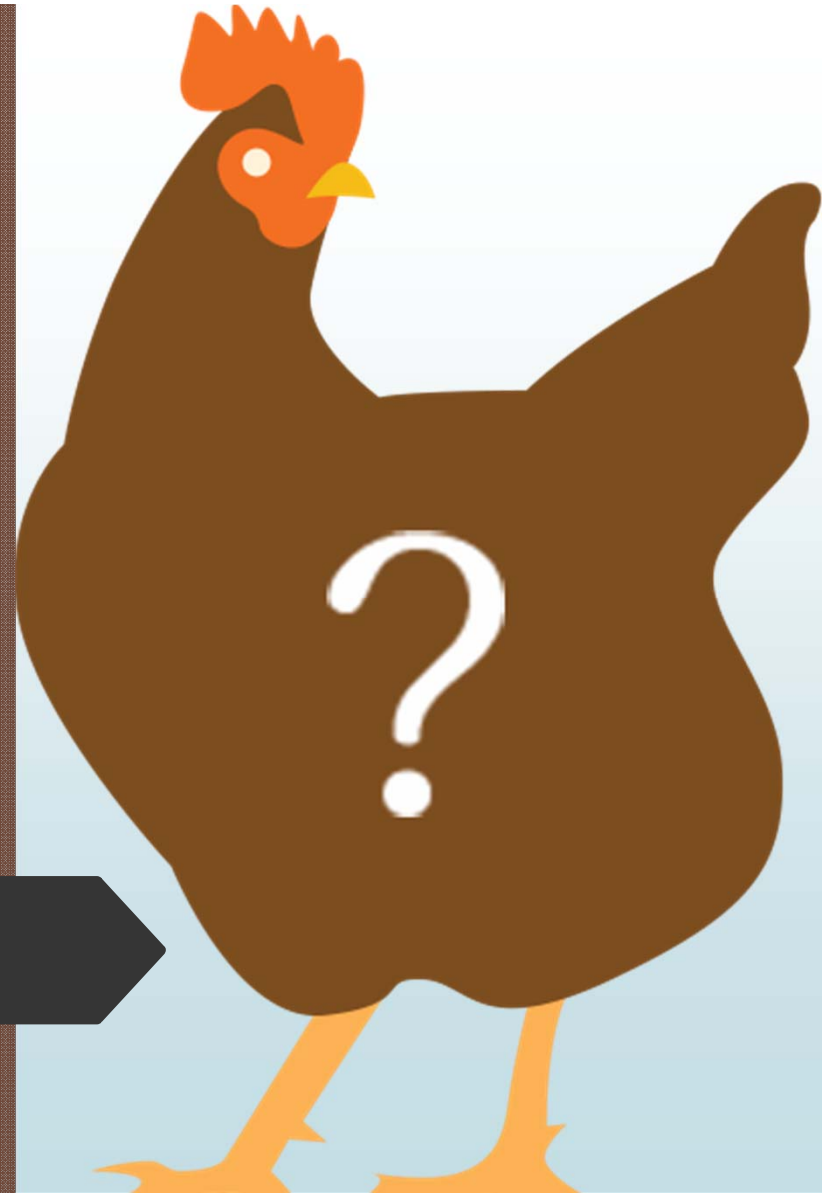


No Longer TAG Monitored

- ▶ Horned Guan
- ▶ Ocellated Turkey
- ▶ Vulturine Guineafowl
- ▶ Green Peafowl
- ▶ Green Junglefowl
- ▶ Reeve's Pheasant
- ▶ Brown Eared-pheasant
- ▶ Bornean Crested Fireback



Questions?





Thank you!!!!!!